

Holy Spirit Catholic Church



The Work of Many Hands



The Kitchen Committee



The Altar & Ambo Committee



The Building Committee



The Acoustics & Music Committee



The Landscape Committee



The Furnishing Committee



The Dedication Committee

When the decision was made for Holy Spirit Parish to move to a larger site rather than expand on its current site, both parishioners and parish staff knew this would be a complicated and ambitious undertaking. Other recently built or renovated parishes had done their projects on land on which their parishes already sat. Holy Spirit was planning and building an entire parish campus on a then empty soybean field. This meant dealing with many agencies and situations beyond the building itself.

The parish Steering Committee had worked tirelessly for years researching and evaluating options before the decision to move was made. Now it was time for new groups to be formed to deal with planning and execution of a master plan, schematic design, furnishings and finish choices within the building, artwork, and other areas. The staff wanted to make use of the many gifts possessed by parishioners, while still maintaining coherence in planning, and communication between volunteers, vendors, and agencies. Yet they knew that building a house for the People of God would not only be guided by the Holy Spirit, but be founded on the work of many hands.

In August 2004, attendance at a national conference on church building and renovation provided the answer. There, a well-known architect presented a framework or system of committees that was able to involve dozens of people. This became the

blueprint upon which the committees of the building process at Holy Spirit were founded.

A Building Committee served as oversight group and direct planners with the architects. Each member of the Building Committee also served as liaison to a Task Committee dedicated to more specific planning. That work was then brought back to the Building Committee for review. There were eight Task Committees: Acoustics & Music, Offices & Classrooms, Kitchen & Hospitality, Technology & Security, Operations & Maintenance, Landscape, Ritual Needs, and Church Furnishings & Finishes.

Some committees had much more to cover than others, and consequently met longer and even split into sub-committees. For example, the Art Committee was a sub-committee of Furnishings and Finishes. While the parish Celebration Book detailed names of studios, artists, and companies involved in the building process, in these pages you will see some of the parish people and some of the volunteer committees which were involved. There are more detailed stories about some of the groups in these pages. However, not everyone was able to be present the day pictures were taken, and space considerations preclude a story about every group. Although some parishioners were able to be involved more than others through the process, each person's efforts were valued as part of the gifts of the Holy Spirit.

A letter from the pastor

I hope all readers of the Key enjoy this special section on our new church and parish complex at Holy Spirit. You will see that many parishioners have been involved in the process, both national and local artists have been employed, and the various trades involved in the project have all gone together to give our parish a wonderful facility.

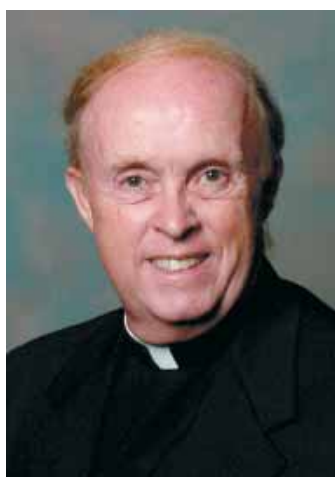
Beginning with the initial grading and site work, then the concrete footings, the steel work, framing, plumbing, electrical, to all the finish details it is a massive project, using the skills of literally hundreds of people have produced a genuine tribute to God's presence in our community.

I want to again thank David Livingood, Steve Ritz, and Bill Graham of GLPM Architects, as well as Ernie Straub III, Michael Knight, and Paul Hinds of Straub Construction for the time, energy and dedi-

cation they committed to this project. In these pages you will hear about some of the parishioners who helped in all phases of the project. I especially want to acknowledge Don McCormick, a parishioner and member of the Building Committee who was a tremendous assistance in the ongoing coordination of the construction project.

You will read about many of the details of our project in the articles in this section. Let me make just two general observations. First is the tremendous pride we feel at Holy Spirit in continuing the rich tradition of other Catholic congregations down through the centuries who have had the privilege of constructing a 'house of God'. No, this is not Notre Dame or Chartres, but it is our church, and we have labored over every last inch of it.

Secondly, I have made the comment several times that I must have slept through the class in the Semi-



Father Michael Tierney

nary on church construction. Everyone says that it's crazy in this time of the shortage of priests to expect the pastor to be involved in all the details of administration. The reality is that there are many things the pastor is required to oversee; his presence is expected. While I regret the times I was not able to meet with the Catechumenate or the kids in Religious Education because of a Building Committee meeting, I believe that it was important for me to participate fully in the building process.

Again, I am hopeful that you will enjoy reading about our special project.

Michael E. Tierney

Holy Spirit Catholic Church
1800 SW 150 Highway
Lee's Summit, MO 64082

PARISH OFFICE (816) 537-6990 **FAX** (816) 537-8104

OFFICE HOURS:
Monday-Friday 9:00 AM-5:00 PM

MASSES:
Weekdays: 8:00 AM (Mon., Wed., Fri.)
Sunday: Vigil: 5:00 PM
Day: 8:30, 10:30

CONFESSIONS:
Saturdays 4:00 PM, or by appt.

TODDLER CARE:
During the 9:30 AM Sunday Mass
(please check the bulletin)

WEBSITE:
www.holyspiritcatholicchurch.net

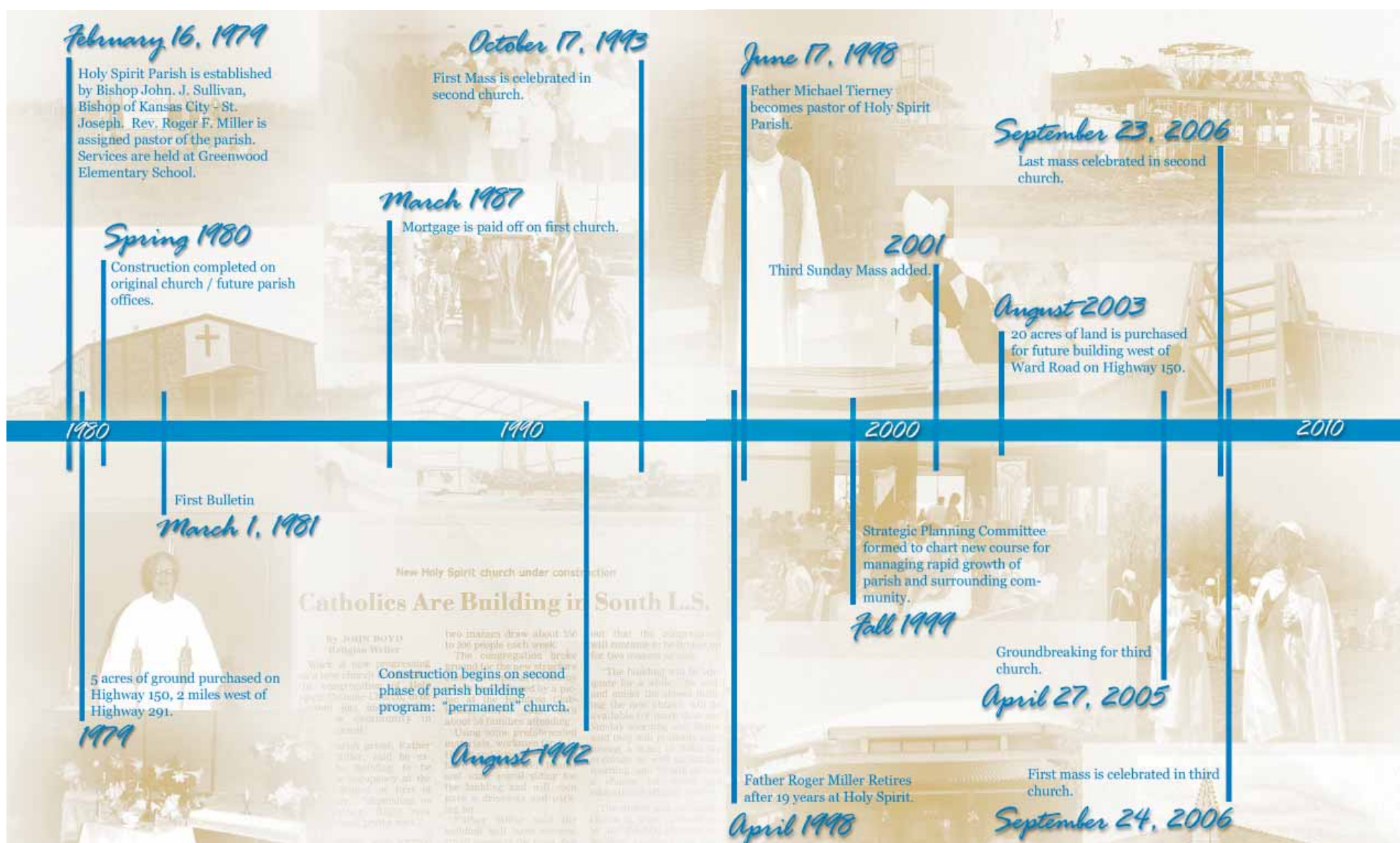
PARISH EMAIL:
parish@holyspiritcatholicchurch.net

PARISH STAFF:



Rev. Michael Tierney, Pastor
Rev. Mr. Rich Akins, Deacon
Ann Hayles, Pastoral Associate
Carol Mathews, Liturgy Coordinator
Tom Kodera, Choir Director
Mary Kay Ryan, CFP Coordinator
Cary McIntosh, Business Manager
David Bremer, Office Manager
Nancy Heifner, Office Assistant
Terry Brunetti, Office Assistant
David Redding, Maintenance

The Celebration Book, which outlines architecture and art information for the new Holy Spirit Catholic Church, can be downloaded as a PDF by visiting www.holyspiritcatholicchurch.net and clicking on the button "New Building Project."



The decision to build:



photo courtesy Bill Manginelli/Manginelli Productions

As South Lee's Summit and the surrounding area have grown significantly since 1979, so has Holy Spirit's number of registered parishioners. In early 2001, a Steering Committee was established. At the first meeting, architect Vince LaTona came to explain how the existing building could be expanded for 300 seats by removing the east and west walls. However, this would also include the need to add 100 additional parking spaces.

There were two clear alternatives: "stay and remodel" or "buy and build." Subcommittees were formed to explore the specifics of each of these options. Even though the "stay and remodel" option presented the parish with a much more cost-effective approach, the future widening of 150 Highway and the development around the present church left little room for the influx of parishioners that were registering. In addition, the expanding of the walls could limit the sense of inclusiveness in the current design. There was strong support for the "buy and build" option, although several parishioners expressed their opposition to this approach.

In June 2001, the Steering Committee decided to purchase land in the new ArborWalk subdivision. The Parish was assured sufficient land for future expansion and green space, and the opportunity to design buildings to suit the size of the congregation.

Above, an aerial view of the new Holy Spirit Parish.

Above left, Don McCormick, Parish Coordinator for the building project, Paul Hinds, Site Supervisor, and Father Tierney

FERTILITYCare™ CENTER

OF KANSAS CITY



Professional Instruction in the Creighton Model FertilityCare™ System

- Safeguards natural fertility
- Organic-no drugs or chemicals
- Assistance with infertility
- Easy to learn • Inexpensive
- Effective natural birth regulation
- Personal, Individualized
- Gynecologic health maintenance for women of all ages

Offered in 7 locations

(816) 224-1177

www.fertilitycarekc.com

OLD HOUSE SPECIALISTS
PRECISION SERVICE CO.
HEATING • COOLING • PLUMBING
Daniel P. Heydon
President
9844 Holmes • Kansas City, MO 64131
816-941-0203 • Fax 816-941-0211
www.precisionserviceco.com

FOX CERAMIC TILE INC.
Commercial & Residential
Quarry • Ceramic • Porcelain • Stone
Kevin Fox, P.E.
President
SINCE 1971
608 West Lasley
St. Marys, KS 66536
785-437-2792
785-437-6008 FAX

ENGLAND'S AUCTION
Members Certified Appraiser's Guild
ONE OF KC's OLDEST
ESTATES • LIQUIDATIONS • ANTIQUES
Michael England
1530 Duck
Grandview, MO
816/761-4200
816/763-2832

Largest Selection of Catholic Gifts & Books in the Midwest
Religious Gifts for All Occasions —
Baptism, Confirmation,
First Communion, RCIA & Wedding
The I. DONNELLY Co., Inc.
"SINCE 1905"
VISIT OUR "ONLINE" 577 PAGE CATALOG AT WWW.IDONNELLY.COM
Monday-Friday 8:30 a.m.-5 p.m., Saturday 9 a.m.-3 p.m.
(816) 363-2828 • 6601 TROOST AVE. • KANSAS CITY, MO 64131

Art and Architecture

The Art Committee was composed of some members from the larger Furnishings and Finishes Committee, in addition to other parishioners who were teachers and students of art, and an artisan or two. The committee began by becoming familiar with plans for the building, and by learning about liturgical artists nationwide. Besides educating themselves in these two areas, the committee needed to consider the possibility of incorporating artwork from the previous church into the new one.

An example of artwork incorporated from the previous church is the parish's Stations of the Cross. They are solid bronze reliefs brought to the church from St. John's Seminary in Kansas City, and were thought to have originally been crafted in the 1930's in Germany. While beautiful, their location in the previous

church, as well as the patina they had acquired through the years made the figures on the reliefs difficult to see. The Art Committee was advised by some to polish or strip the patina to make them brighter. The group studied the question of patina and how the stations were displayed, making mock-ups with different backgrounds. Working with the architects through the Building Committee, they decided on special lighting and background for the 14 locations. They also made the decision to give the stations only a gentle cleaning, until they could be installed in their new surroundings. At that point, further evaluation would be made. Once the stations were installed with new background and lighting, however, their true artistry quickly became apparent and no further work is anticipated.



Regarding new artwork, over the course of many meetings the group came to a consensus of artistic style it was looking for, and always kept before it the knowledge that their work was on behalf of the parish. During the months they met, one goal they hoped to realize was to incorporate art from both national and local (or regional) studios. A central focus for the artwork was the depiction of the Holy Spirit artistically in fire and wind. The parish

already possessed a large window depicting the Spirit as a dove, which would be incorporated into the new building. Motifs of wind, fire, and a dove, the committee learned, are the way the Holy Spirit's manifestation is described in the New Testament. So the committee built on three manifestations of the Holy Spirit in three areas inside



The Art Committee

the church: the Annunciation to Mary, the Baptism of Jesus, and Pentecost. In addition, a major new stained glass window in the

See next page



Tony & Neva Mistretta, Owners
Fax 816-767-8066 • Phone 816-763-4664
www.peonies.net
10001 E. Bannister Rd.; KCMO 64134
Mailing Address: P.O. Box 14
RAYMORE, MO 64083

Sentimental Art Glass Company

Proud to be part of the new Holy Spirit Church construction

New Commissions and Restorations:

- † Residential
- † Commercial
- † Institutions
- † Churches



Wade Walchak, Owner • Belton, Missouri
816-322-7527

United Catholic Credit Union

wishes you a

HAPPY HOLIDAY SEASON

We provide our Members personal attention with a variety of services:

- Savings Accounts
- Christmas Club Accounts
- New & Used Vehicle Loans
- Share Loans
- Free Notary Service
- Family Insurance
- Share Draft Checking
- Cancer Insurance
- Electronic Direct Deposit
- ATM Cards
- Competitive rates on savings accounts and loans

HOW WOULD YOU LIKE TO HAVE A NEW CAR UNDER THAT CHRISTMAS TREE?

Our special auto loan program will make it possible to own the car of your dreams. Whether new or pre-owned, you can drive away knowing you have a great interest rate and no payments for 3 months



Serving members of Holy Spirit Parish and 14 other eastern Jackson County Parishes.
Don Good, President and Manager, is a member of St. Margaret's Parish.

RATES

As low as 4.90% APR* for up to 60 months.
Fast pre-approval
* APR=annual percentage rate-interest rate based on applicants credit

7043 Blue ridge
Raytown, Missouri 64133
Phone: 816-356-8757
Fax: 816-356-8774
www.unitedcatholiccu.org

Touring Churches

As we began to study the Church's documents relating to building a new church, the Liturgy Committee knew it must educate itself not only about the American Bishops' principles, but also about how other recently built or renovated churches in our diocese had carried out those principles.

The Liturgy Committee invited members of the newly formed Building Committee, as well as the existing Environment Team, to go on tours of area churches. We visited 14 new, nearly new, or underconstruction parishes to see what design and function was working for them.

We would meet on a Saturday morning and car pool to 2 or 3 churches to get ideas of what they had chosen to do. We asked at each church what they wished they had done differently and what they wished they had not done. Staffs and even pastors were very gracious to show us around their respective facilities. We listened very carefully and took so many ideas away from each parish that we each began to keep notebooks for later discussion. We also took lots of pictures. Later, one member of the Church Tour group (as we began to call ourselves) organized the pictures into subjects, such as Baptismal Fonts, Crucifixes, etc. Those pictures proved invaluable throughout the building process.

Some days after the tour, we ate lunch together and discussed what we had seen. It was truly a rewarding experience that left us full of ideas and excitement about our future at Holy Spirit. It was also somewhat confusing trying to decide what ideas would work best for us! In the end many of the people on the Church Tour group went on to serve as the Furnishings and Finishes Committee.



Stations

The bronze Stations of the Cross at Holy Spirit are as beautiful as they are mysterious. They have hung in both churches. However, until recently, little was known about them. A fax was sent to the parish from John Massman, inquiring as to their whereabouts. He noted that his grandparents, Henry J. and Mary Massman originally donated them to the Chapel at St. John's Seminary back in the 1930's. When St. John's closed, the stations were transferred to Holy Spirit.

John was informed that the stations have a new and much improved home at the current Holy Spirit. He and his wife, Sue, have seven children and seventeen grandchildren. He will continue passing on the story to his family about the lovely gift his grandparents donated to the diocese and its lasting beauty and inspiration.

Art and Architecture continued

sanctuary wall and the glass church tower also feature wind and flame.

Early on, two schematic architectural design questions came to the committee for suggestions. One was the walls & window areas in the chapel. The chapel had been envisioned as able to accommodate different kinds of prayer, with a meditation garden planned just outside it. Suggestions from the Art Committee helped better utilize window design lines with anticipated uses, and the possible incorporation of artwork. Another design question was the sanctuary wall in the main church. It was suggested to be re-designed to incorporate dynamic lines of movement—in keeping with the Spirit's moving in fire and wind—rather than the more static and formal architectural lines initially shown.

More new artwork and current artwork continue to be realized. Five of the six stained glass windows from the



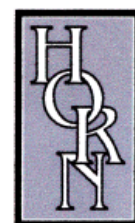
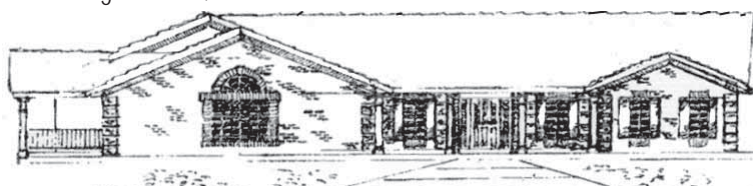
previous church were studied to find new use by making models and transparencies. Those are now in the chapel. Design for the tower was achieved in concert with an Iowa company by also crafting and using models and colored drawings. Some artwork is still in process, but committee members say they have grown and learned much from one another, from the church, and from the art world in their work together.

Cullen Funeral Home, Inc.

612 W. Foxwood Drive
Raymore, Missouri 64083
Greg Cullen, President

816-322-5278

FAX 816-322-2818



**Printing
&
Office Supply,
Inc.**

Full line of office supplies

Copy service

Fax service

UPS shipping

Binding

Laminating

Typewriter repair

332 S.E. Douglas (Downtown Lee's Summit)

Fax 816-246-7366 • 816-525-2077

8:30-5:30 Mon.-Fri. • 9:00 -1:00 Sat.

HOLY SPIRIT CATHOLIC CHURCH

Congratulations!

Proud to have been a part of your vision

glpm architects inc. www.glpma.com

You plant a seed, nurture it, and watch it grow. In our case the seed was planted in 1979 when Holy Spirit Catholic Church began in Lee's Summit, Missouri. Much like a tiny little acorn, Holy Spirit is growing a little every day into a mighty oak. When most people think of landscape work trees, shrubs, flowers and turf come to mind. The committee tackled these issues and much more. Discussions of engraved paving bricks, colored concrete entry, water fountains, family recognition, memorial, and cutting gardens, site lighting and irrigation went beyond the normal plant material topics. As with any project of this nature it starts with great people, a good plan, and the perseverance to see it through.

In order to build in Lee's Summit, all projects are required to provide a 'minimum' of landscape plants and sizes. Our 'minimum' required plantings consisted of 179 shade trees at 2.5" caliper, 35 ornaments trees at 1.5" caliper, 24 evergreen trees at 6' height and 462 shrubs at 3-5 gallon.

Landscape and Beyond

Given these requirements a local civil engineer, as part of their scope of work, prepared a landscape plan that would meet the city requirements. At the time the architectural plans were submitted to the city for approval, our committee was beginning to meet and gather ideas of what we really wanted Holy Spirit to become. Using the civil engineering plan as a guide for the city requirements, it was now time to test the talents of the committee.

J Gattermeir, a true ombudsman for everything green, put this passion to work in his yard and garden in addition to working for 10 years as a groundskeeper at Our Lady of the Presentation. J enjoys seeing how his work has matured over the years. Cindy Maxwell is currently enrolled in the Master Gardener courses at the University of Missouri Extension. Carol Quinn is a long time nursery profes-

sional who assisted the parish with landscape choices at the previous church. Carol Mathews' focus was both practical and spiritual: liturgical theology speaks of the people becoming a gathered assembly in a process that begins when they are assembling at the church. Conrad Lamb brought with him both intuitive and learned knowledge of plants through his life experiences as a gardener and work at the city.

David Campbell, a licensed landscape architect, remembers the day he approached Father Tierney with some concerns about the site plan, maintenance, paved areas, lighting and above all, the landscape plan. Father Tierney was the final member of this committee; he continued to guide and challenge us with some of the non-plant related items like the fountain, engraved pavers,

meditation garden, and the entry sign.

Our committee started meeting monthly in May of 2005. Father Tierney asked David to prepare an initial landscape plan with selections of tree species for discussion purposes. Concepts soon followed for the meditation and cutting garden, entry signage and a new layout for the front entry. These new ideas, which deviated from the original civil engineering plan, still needed to comply with the city requirements. In these monthly meetings the committee would share photos of plants and talk about the grounds becoming an arboretum of sorts by placing specimen trees around the site.

When the time was right, the call went out for help. Tom DeDonder and Mick Mithelavage were instrumental in organizing the volunteers and equipment. There have been nine working Saturdays that members of the committee and many other volunteers—as many as 40 on occasion—have shown up to help rake, dig, place weed fabric and rock, plant and mulch over 175 trees and

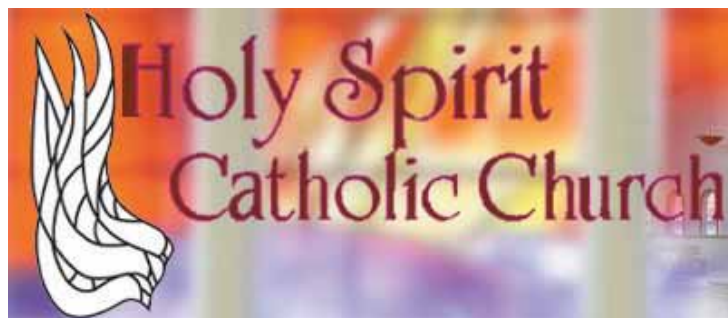
535 shrubs. If donated materials could not be sequestered, trees, shrubs and other landscape materials were ordered by members of the committee from local nurseries and garden shops and paid for out of the landscape budget.

Many of the trees were installed in the heat of the summer and surely would have perished if it were not for the efforts of Conrad Lamb, Tommy Jewitt and his son Thomas. These men spent many hours and days watering. In the early days, there was no working water source on site and they would truck water in a 400 gallon tank and fill 5 gallon buckets, oftentimes more than once for each tree. In late September 2006 an irrigation system was installed by a local landscape contractor, reducing some of the tree watering needs and allowing for a more lush landscape around the building.

The entry sign landscaping was installed by a group of Boy Scouts organized by Nikolas Bravo for his Eagle Scout project. Plants were purchased by the church and installed per a plans and direction provided by the committee.

Exhausted, the committee and all of its volunteers, have finished planting for the 2006 season and have scheduled more plantings of ground cover and additional trees in the spring. This will conclude our planting requirements for occupancy permit; however, we will continue to plant annuals and perennials, as well as the develop the meditation and cutting gardens. The committee is very proud of what was accomplished and would love for you to stop by and see what we have done.

A few of the people mentioned here have dedicated many hours of there time and talents to make the grounds of Holy Spirit the best they can be. The committee would like to express their deepest gratitude to ALL of the volunteers who made this project a success.



Stained Glass Windows by
Bovard Studio Inc.

2281 HIGHWAY 34 EAST,
FAIRFIELD, IA 52556-8560
800-452-7796

TEL: (641) 472-2824
FAX: (641) 472-0974
WWW.BOVARDSTUDIO.COM

EMAIL:
INFO@BOVARDSTUDIO.COM

GARY WOLZ

Holy Spirit parishioner

Licensed Insurance Planning
Specialist

(816) 525-0438

gwolz@kc.rr.com

AFFORDABLE Insurance

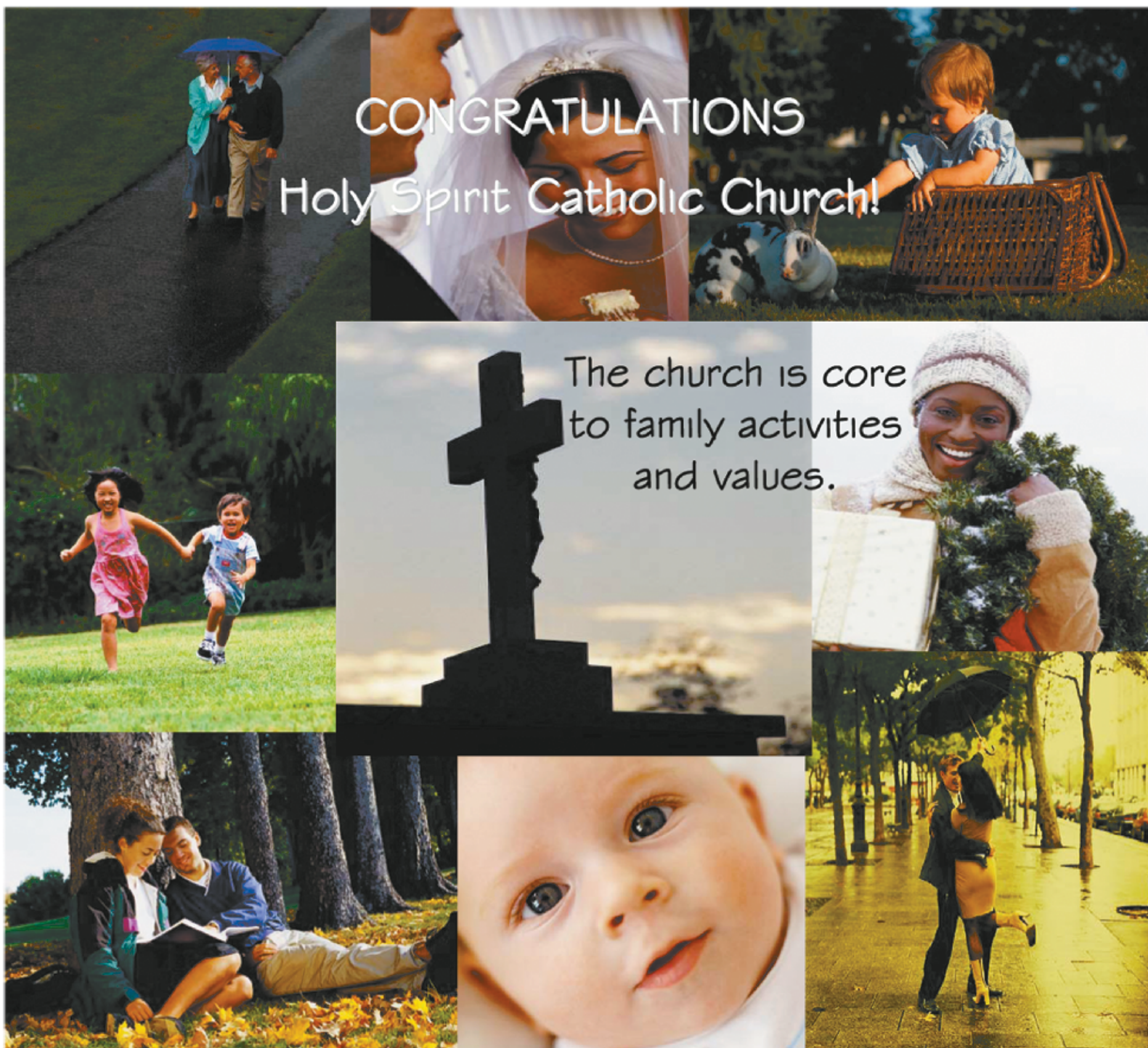
for the Self-Employed,

Small Business Owner, Employees, Individuals and Family

Major Medical, HSA, Life, Disability Income,
Long-Term Care, Med-Gap



**American Republic – John Hancock
Kansas City Life**



CONGRATULATIONS

Holy Spirit Catholic Church!

The church is core
to family activities
and values.

We are very proud to be a part of your mission.



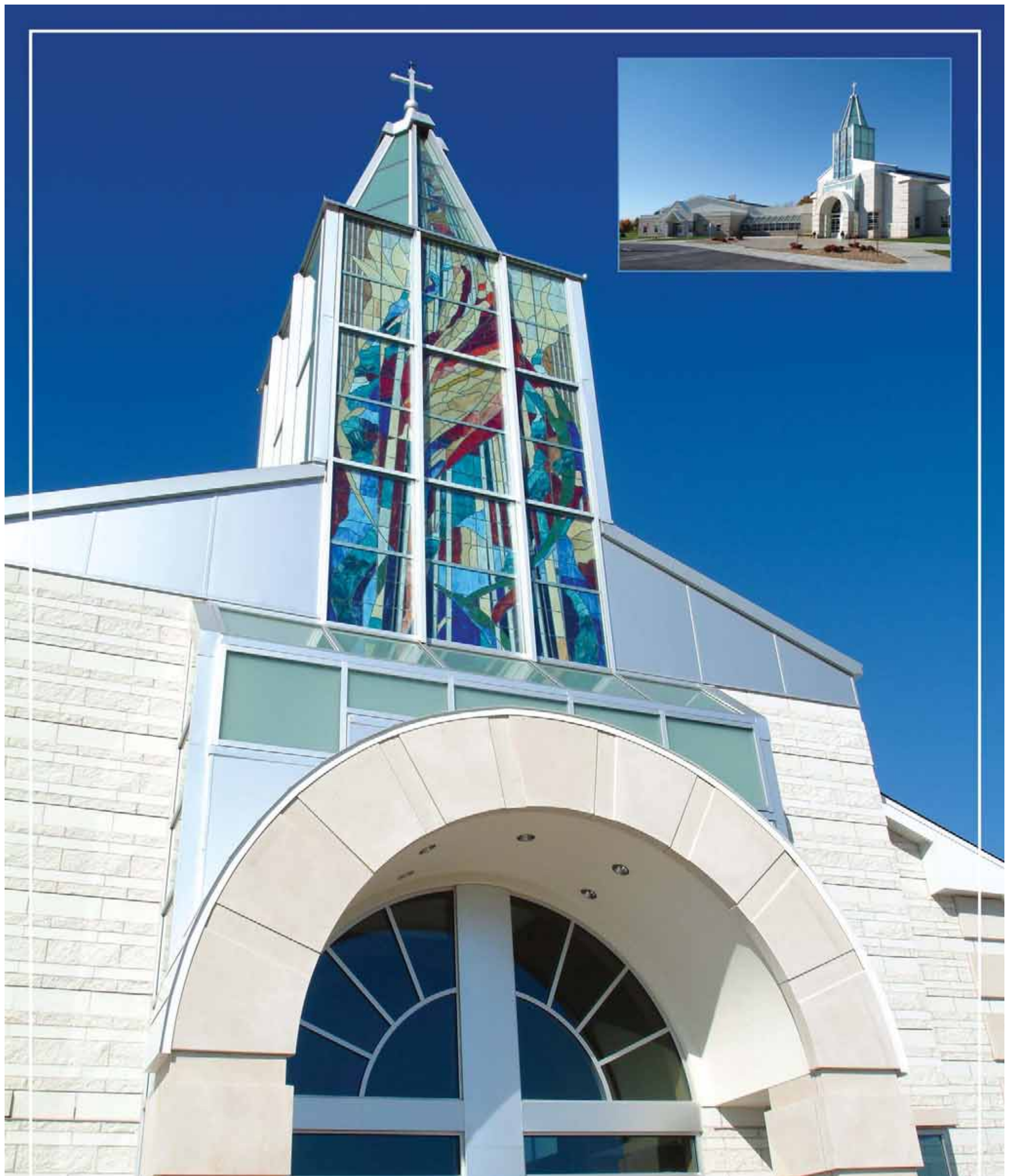
TEMPERATURE ENGINEERING
CORPORATION

PO Box 419 Stilwell, KS 66085

913-533-2310 Ph KS 816-861-3300 Ph MO
913-533-2399 Fax KS 816-861-5553 Fax MO

We provide unparalleled fast track design/build construction, maintenance and service for heating, ventilation, air conditioning and refrigeration systems.

We are passionately committed to providing professional, innovative and environmentally safe solutions for our clients.



ACCOUNTABILITY : HONESTY : INTEGRITY : WORK ETHIC : RESPECT

WE MAKE CONSTRUCTION EASY FOR OUR CUSTOMERS.

913.451.8828

www.straubconstruction.com

Straub
CONSTRUCTION